



CAMERA DIRECTIONS

You must sign up and pay an additional weekly fee in order to view live video feed in your child's classroom. If you signed up for camera access, follow these instructions to view your child's classroom:

Go to: <http://71.245.163.28> and enter your login and password.

Login: _____ Password: _____

FAQs:

PLEASE NOTE: The system requires either 1) an Active X control for Internet Explorer or 2) an installed Java applet for proper operation. The instructions below assist in setting the security of your computer to allow these to work. Based on your employer, you may not be able to make these changes to your work computer.

Browser Support

Testing has found that the remote access works better in Internet Explorer (IE) 9 and below, Chrome, or Firefox browsers. For information on Supported

Browsers: <http://www.usavisionsys.com/forums/viewtopic.php?f=18&t=256>

Mobile Device

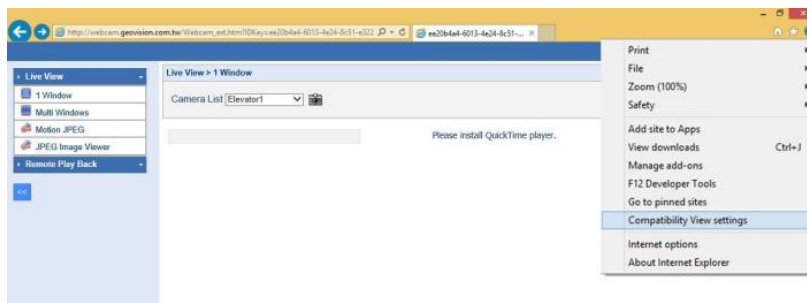
Instructions on iPhone/iPad support: <http://www.usavisionsys.com/forums/viewtopic.php?f=18&t=171>

PLEASE NOTE: When you access the system with your mobile device, you **MUST** select JPEG Streaming Type

DIRECTIONS FOR INTERNET EXPLORER

If you access the system from IE11, you must set compatibility mode using the following instructions:

1. After logging into WebCam Server, click on Tools and select Compatibility View settings.



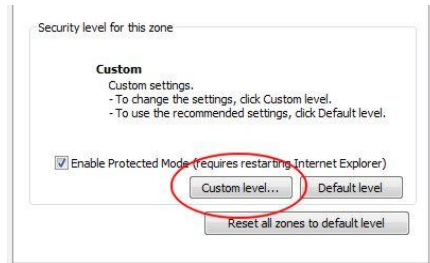
2. Click on Add to include this web address into the Compatibility View list.
 - a. <http://71.245.163.28/>
3. Click OK.

(OVER)

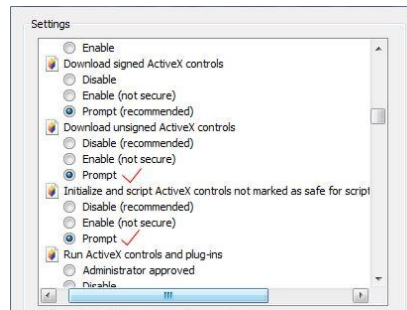
Internet Explorer ActiveX Security Settings

In order to access the RSA webcam server from Internet Explorer, you must enable certain security settings. To check if Internet Explorer is ready to run active X controls required by the webcam server, please do the following:

1. Open Internet Explorer.
2. Select the Tools menu and then select Internet Options.
3. Click on the Security tab at the top of the Internet Options screen.
4. Click on the Custom Level button as seen below.



5. This will open the Security Settings - Internet Zone screen. Scroll down the Settings list until you reach the settings that enable active X controls. The following two settings need to be set to "Prompt" or "Enable". It is more secure to set these to prompt as seen below.
 - o Download unsigned ActiveX Controls
 - o Initialize and script ActiveX controls not market as safe for scripting



6. When you are done. Press OK. Then OK again to save those settings. Windows may ask you to also confirm that you want to change these settings. Confirm.

DIRECTIONS FOR CHROME AND FIREFOX

In order to access the RSA webcam server from Chrome or Firefox, please login and select the Motion JPEG option. Please see image below.

